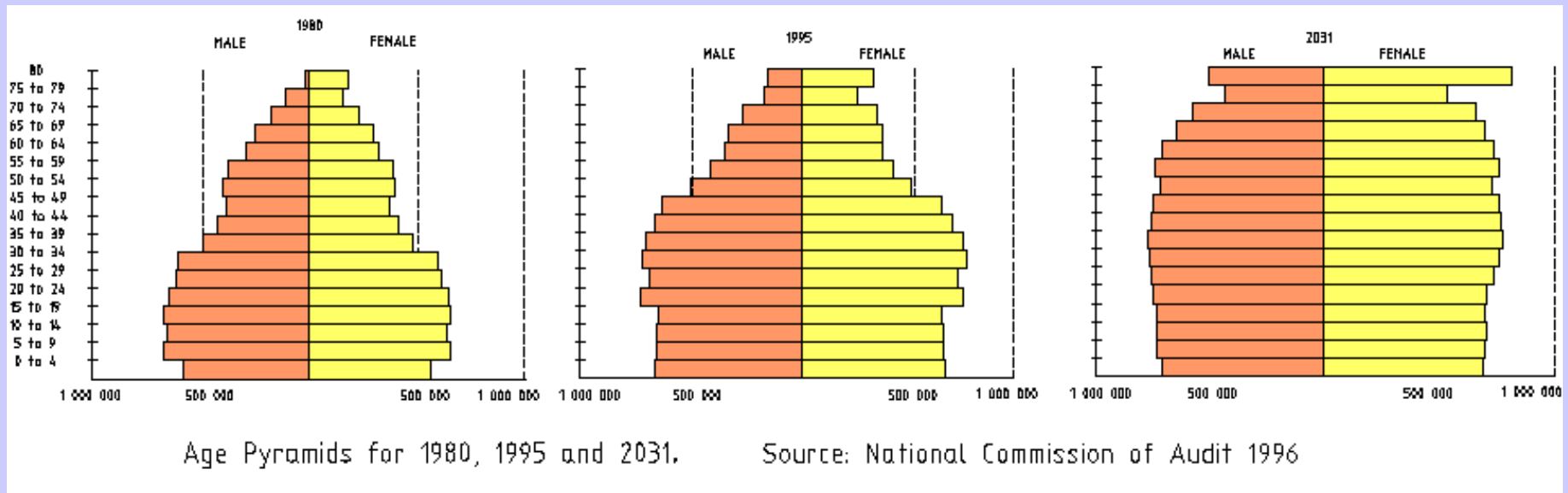


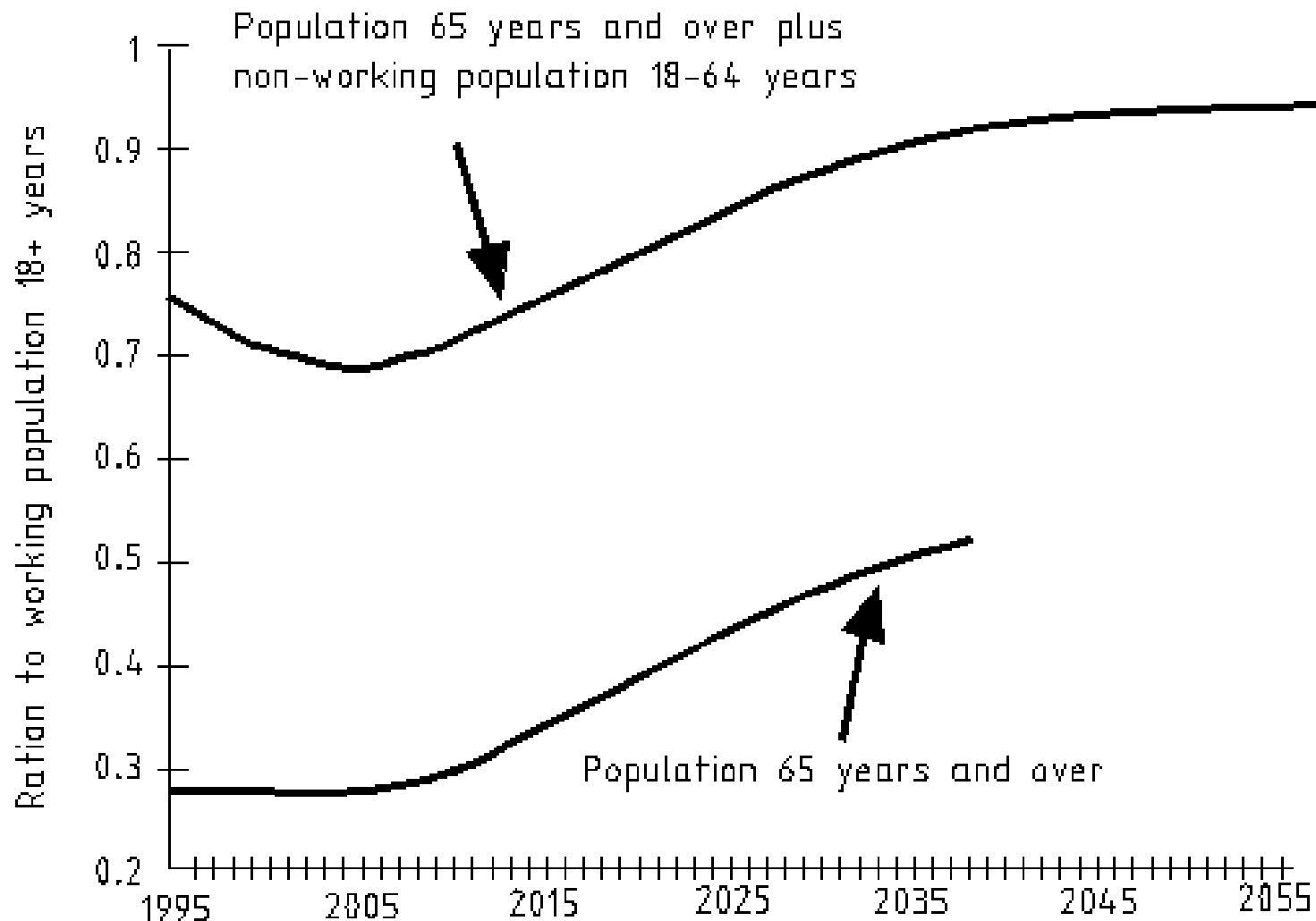
The Mareeba Wetlands: Planning for Wildlife Management through Tourism

© Tim Nevard 2001

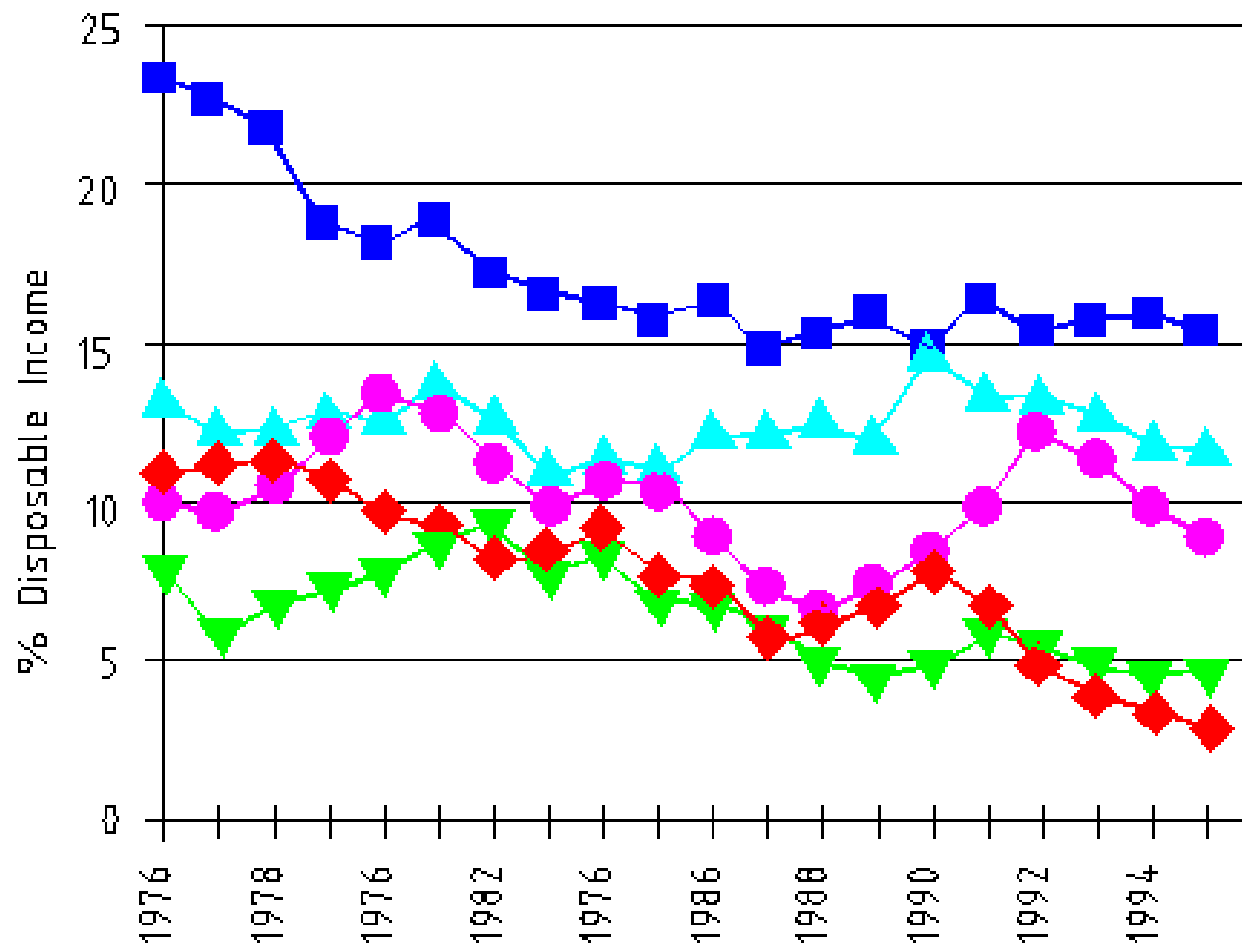
PITT & SHERRY







Workforce dependency ratios modelled from 1995 to 2055.
Source: National Commission of Audit 1996



Household Savings as a percentage of disposable income.
 Source: Australian Financial Review (1996)

Figure 1

**Estimated and Projected Operating Results Queensland Government –
1994-95 to 2005-06.**

Source: Queensland Commission of Audit 1996

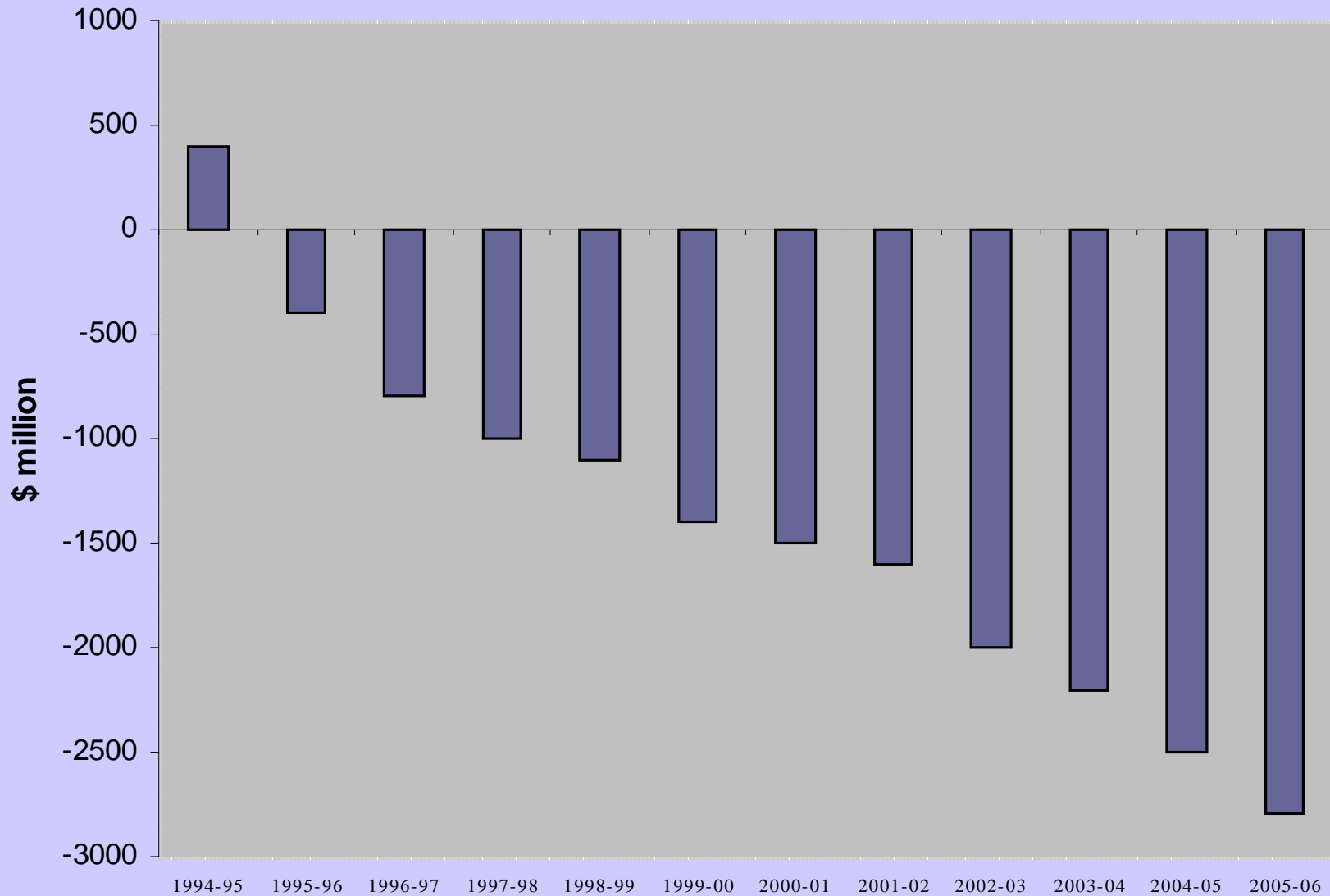


Figure 2

**Number of wildlife reserves in KwaZulu Natal, open to the public in 1997,
By Size Category** source: Nevard et al (1998)

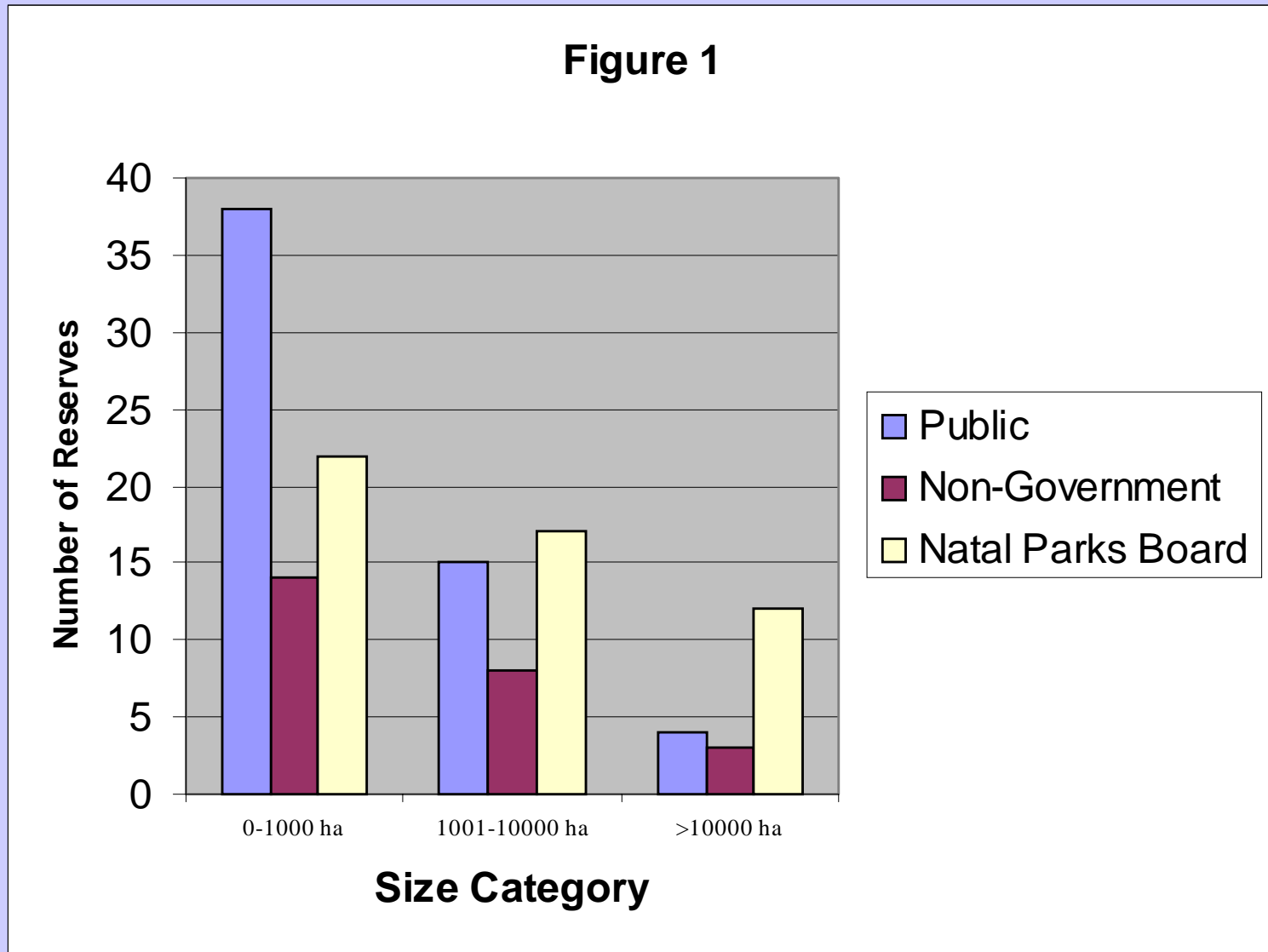


Figure 3

**Number of wildlife reserves in KwaZulu Natal, open to the public in 1997,
By Size Category**

Source: Nevard et al (1998)

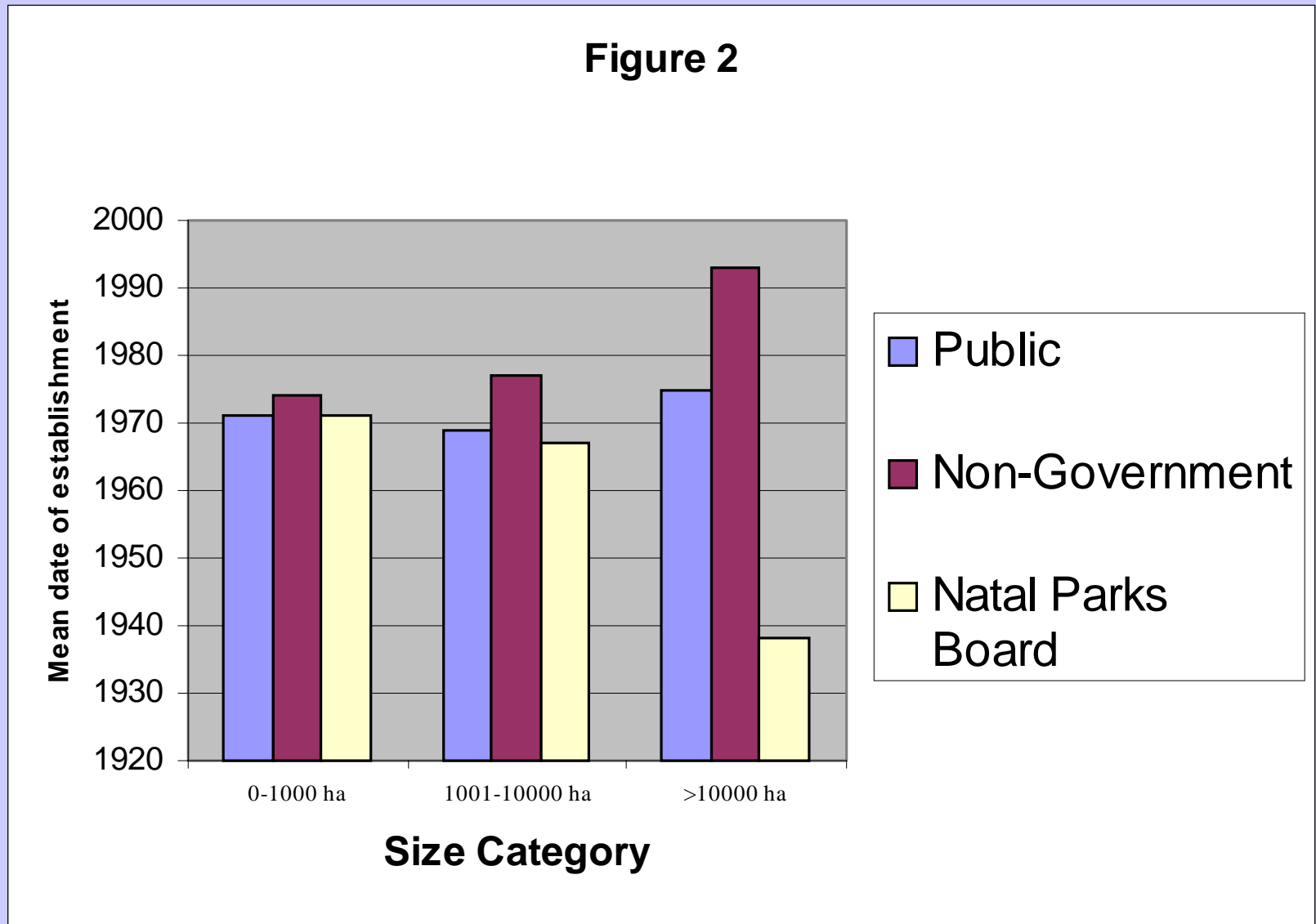


Table 1 Visitors Seeking Wildlife-Related Activities in Australia in 1989

Country of Origin

Canada	61%
Japan	79%
Europe	68%
U.K.	59%
USA	57%
Asia	55%
NZ	36%
Other	35%

Source: Brokensha and Guldberg (1992)

Figure 4 The Mareeba Tropical Savanna and Wetland Reserve

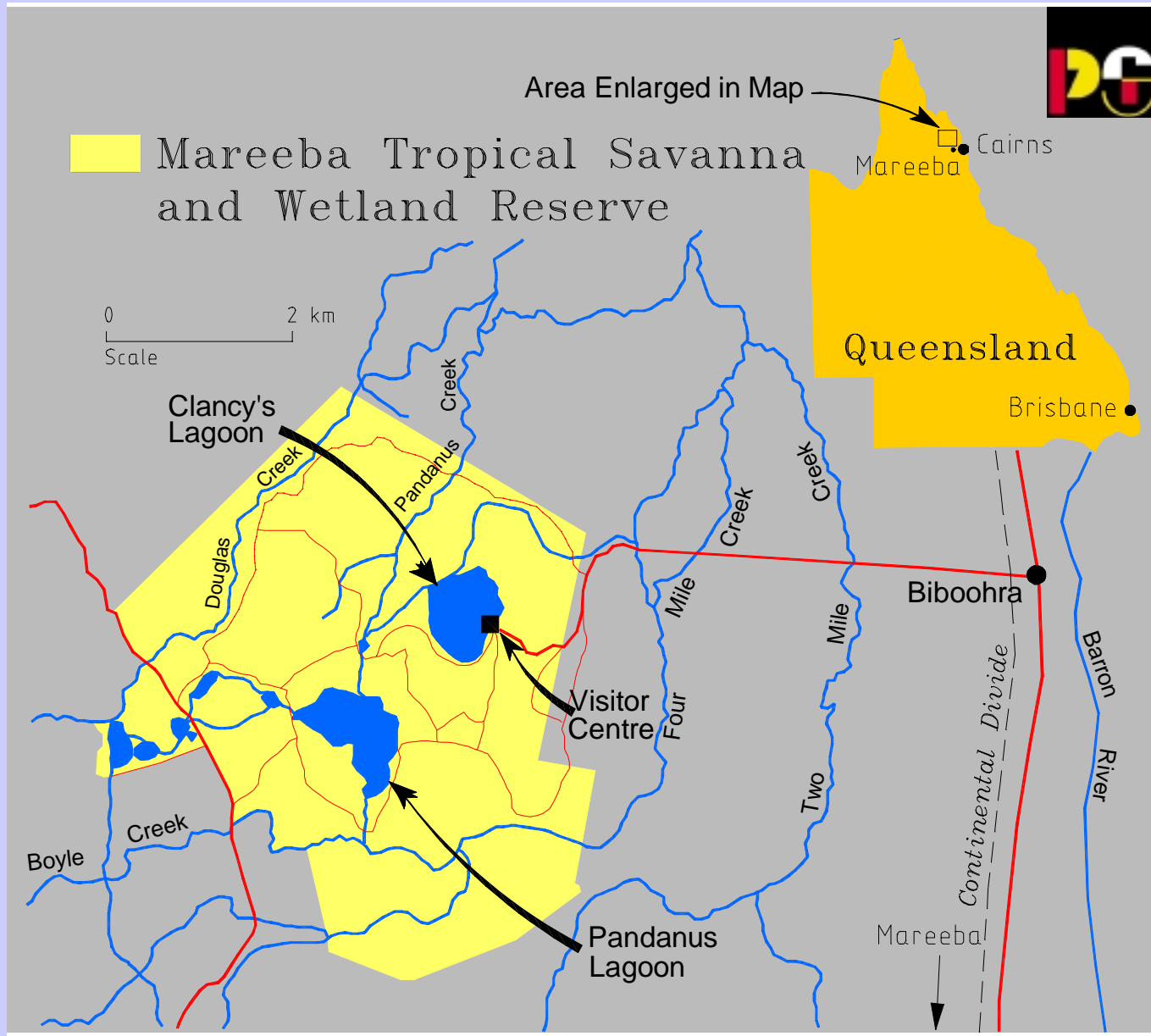


Figure 5 Mareeba Wetlands; Tourism Infrastructure and Visitor Zoning

